

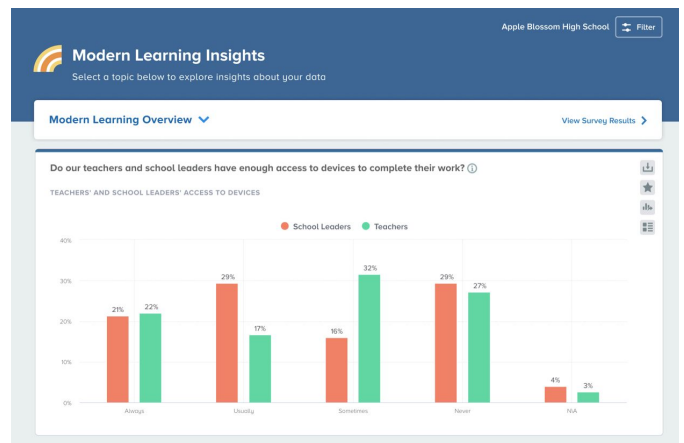
# Ensure equity across your teaching-learning environments

The BrightBytes Modern Learning Solution provides educators with insights into their new and changing learning environments to ensure equitable learning support for all students. Leverage data on the instructional environment, technology, social & emotional learning, and equity and access to understand the needs of your district, whether you're on campus or remote.

## The Modern Learning Solution

The shift to “modern learning” has brought a host of questions that can be difficult to answer without data insights or physically seeing what’s going on day-in and day-out. Enable your teachers and school leaders to make informed decisions with data around the following questions:

- ✓ Do our students and teachers have adequate support to be successful in a modern learning environment?
- ✓ How can I ensure equitable access to technology and learning opportunities for all students?
- ✓ How are student social-emotional competencies adapting to change?
- ✓ How do our parents feel about the current learning environment?
- ✓ Do our school leaders effectively communicate expectations for student learning?



### BrightBytes is a data and analytics platform for K-12

Our platform covers areas specific to K-12 and is built for educators so that you can use data to impact student outcomes and achieve school and district objectives.

Since 2012, BrightBytes has provided data and analytics solutions to **1 in 5 schools across 47 states**. We're proud to have been recognized with over 30 industry awards in data and analytics.

# How does it work?

The Modern Learning Solution uses a research-driven framework that enables district leaders to evaluate their learning programs and resources by providing insights into the following areas: Access, Skills, Support, Professional Development, Instruction, and Social & Emotional Learning.

By collecting responses via a single, unified survey administered to your educators, students, and parents, educators can effectively leverage data to make strategic decisions with confidence.



Available to students, parents, teachers, and school leaders



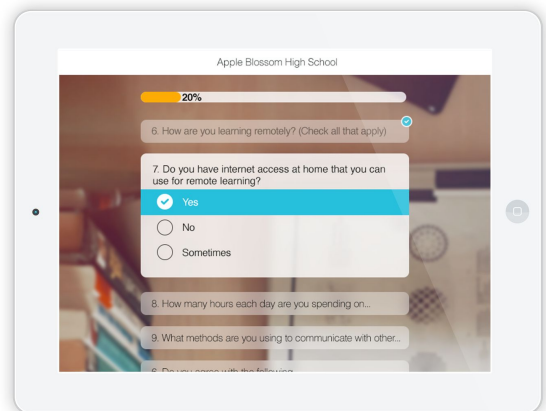
Age-appropriate and available in multiple languages



Accessible via any internet-connected device and optimized for different screen sizes



Centralized distribution and management



## With this solution, district and school leaders can:

★ Gain visibility into the health and state of teaching-learning environments and practices to inform strategic decisions

★ Ensure equitable access to technology and learning opportunities for all students

★ Determine and address areas of need down to the building and grade level (e.g., Do middle school students treat others with respect online?)

★ Identify technology skill gaps for students and teachers to determine actionable next steps (e.g., personalized professional development)